



MORGAN COUNTY
GENERAL PLAN UPDATE

Start Here Welcome!

Step 1: Sign In

- Please print your name **legibly** on the sign-in sheet
- **Add** your email if you'd like to receive updates.

Step 2: Explore Stations

- The General Plan is a long-term **blueprint** for how the county may grow over the next **20–30 years**.
- **Visit** each station, **review** the displays, and **share** your input on topics like parks and trails, transportation, utility services and future land use in the nine community areas.

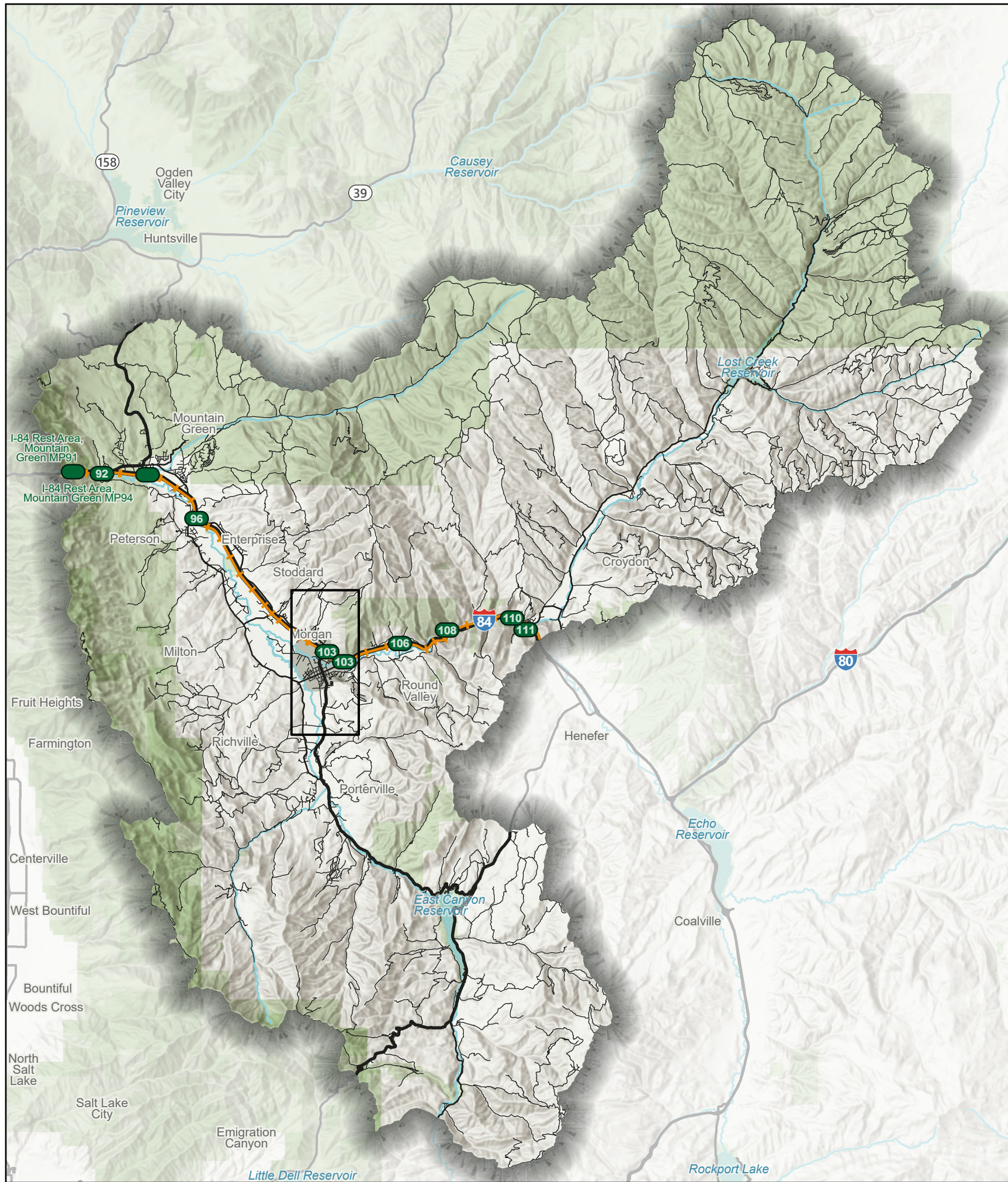


MORGAN COUNTY
GENERAL PLAN UPDATE

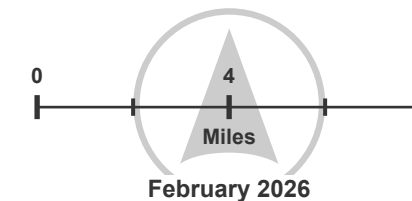
Station 1

Countywide Maps

- **Explore** countywide maps showing parks and trails, roads, public facilities, waterways, soils, and utility service areas.
- **Add** your input by writing directly on the maps or using sticky notes to mark missing links, problem areas, or places needing safer roads or better services.
- Please **write** your comments so they can be captured and used in the planning process.

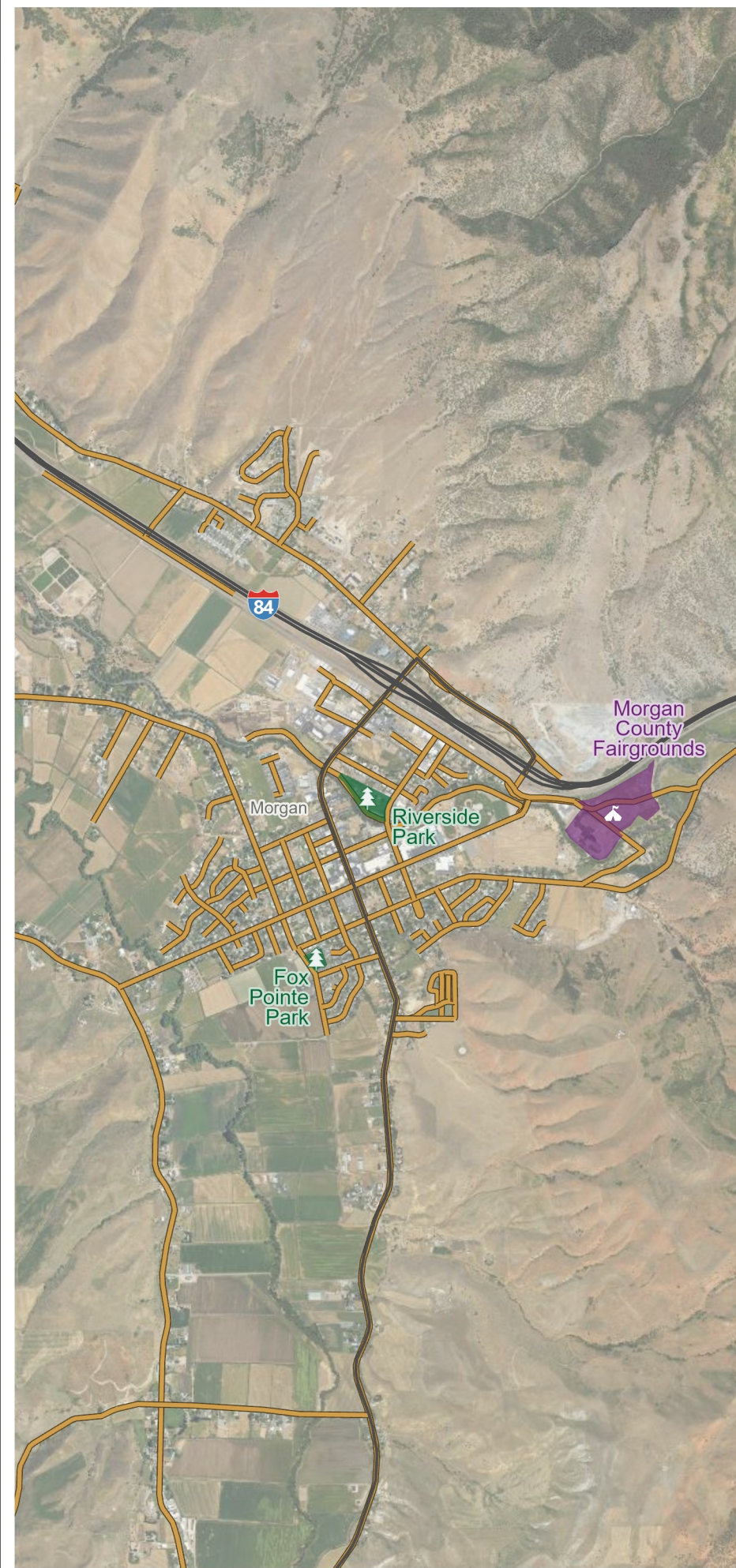
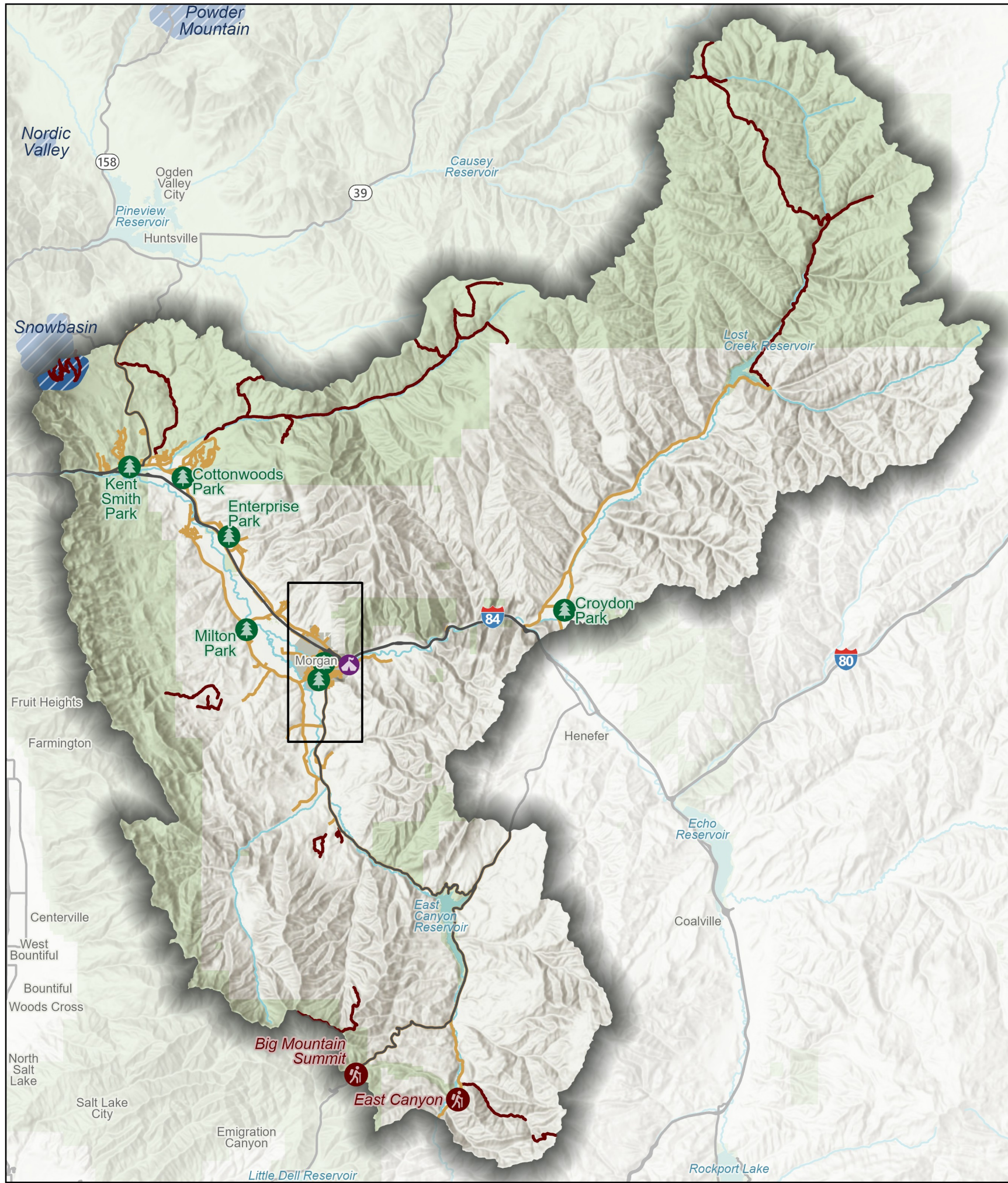


TRANSPORTATION









- Freeway Exit Locations
- +— Railroads





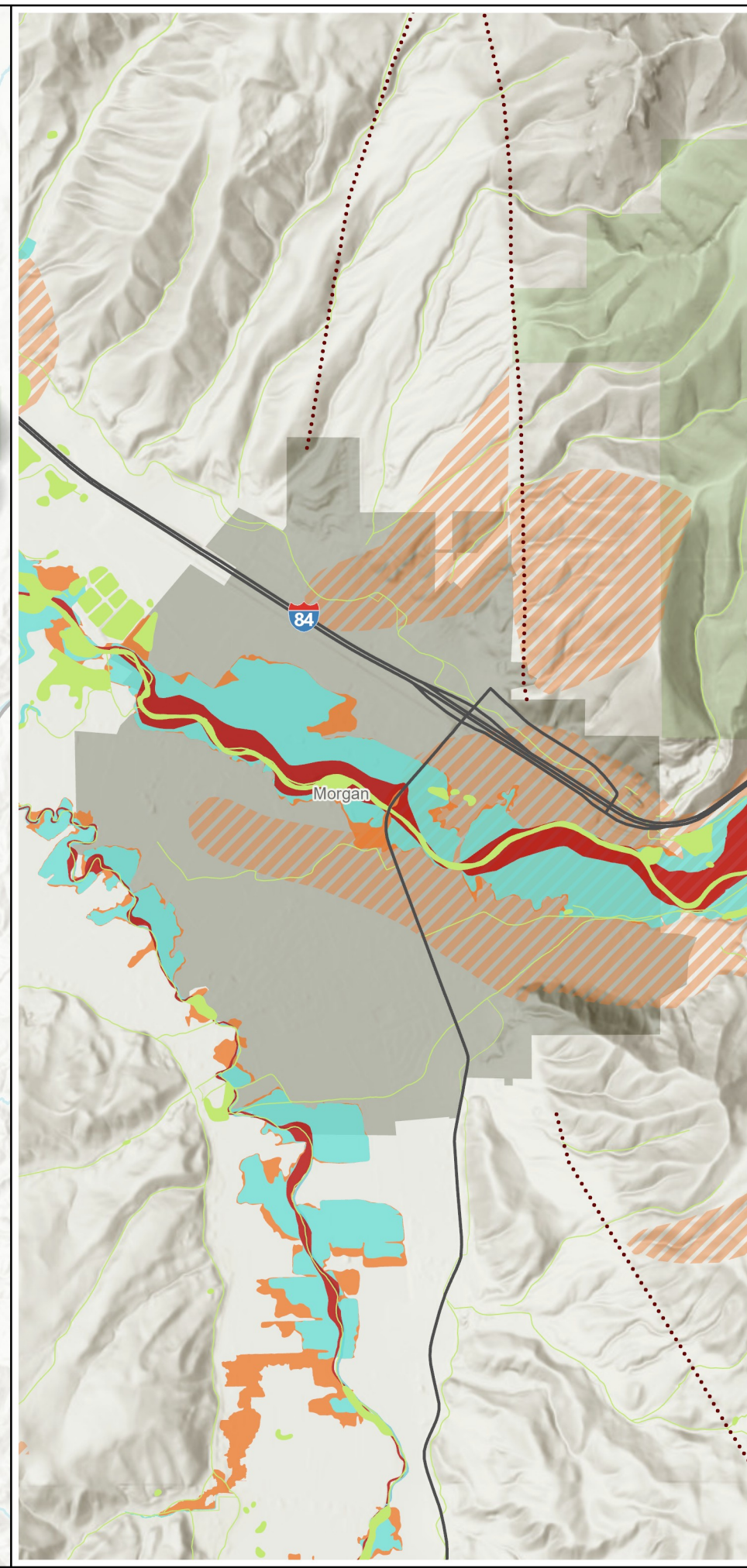
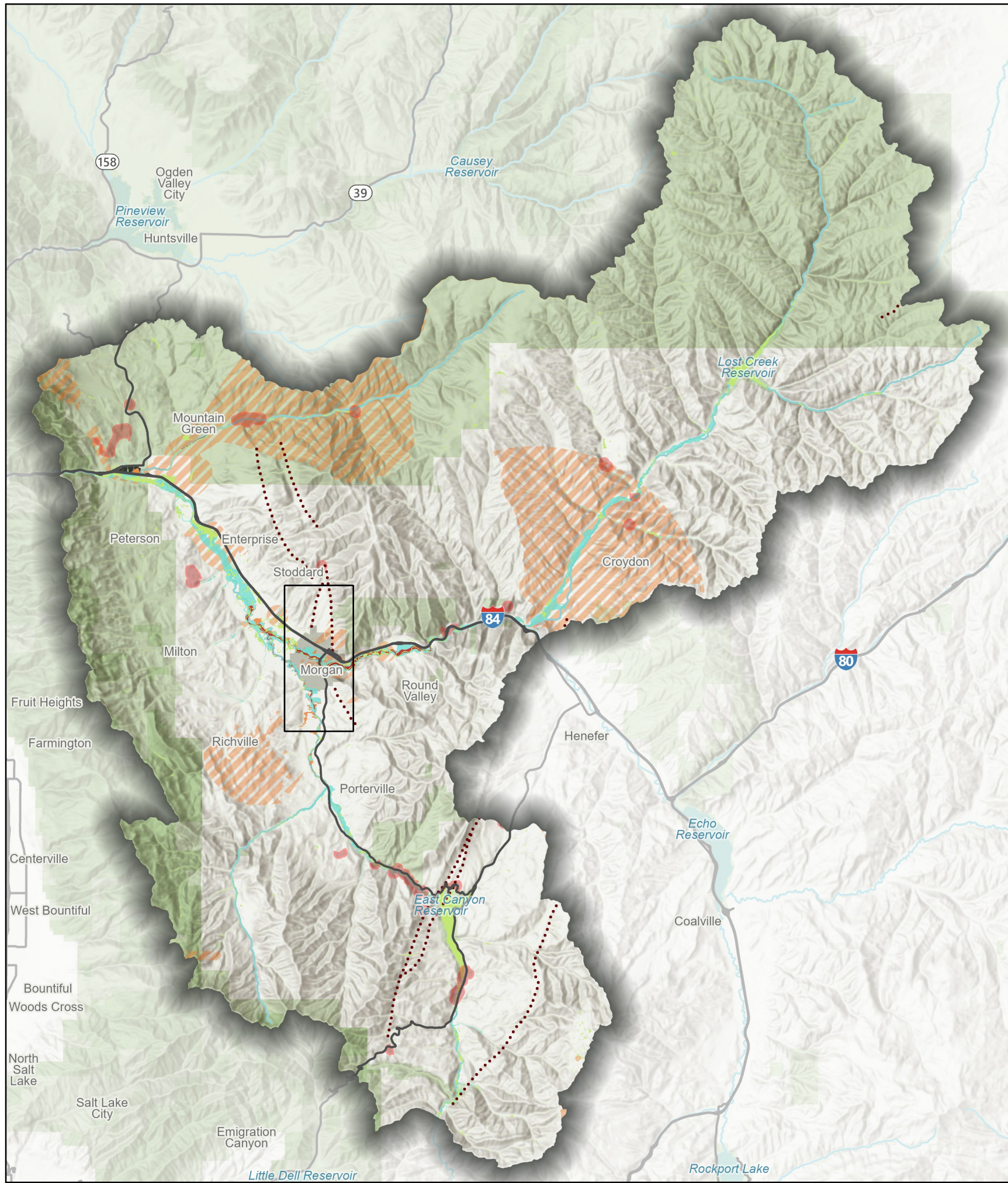
PARKS & TRAILS



-  Parks (7)
-  Fairgrounds (1)
-  Trailheads (2)
-  Multiuse Trail
-  Bikeways
-  Ski Area Boundaries

*Recreational amenity locations shown are illustrative and for general reference only. This map does not indicate or imply that any specific lot or parcel is encumbered.



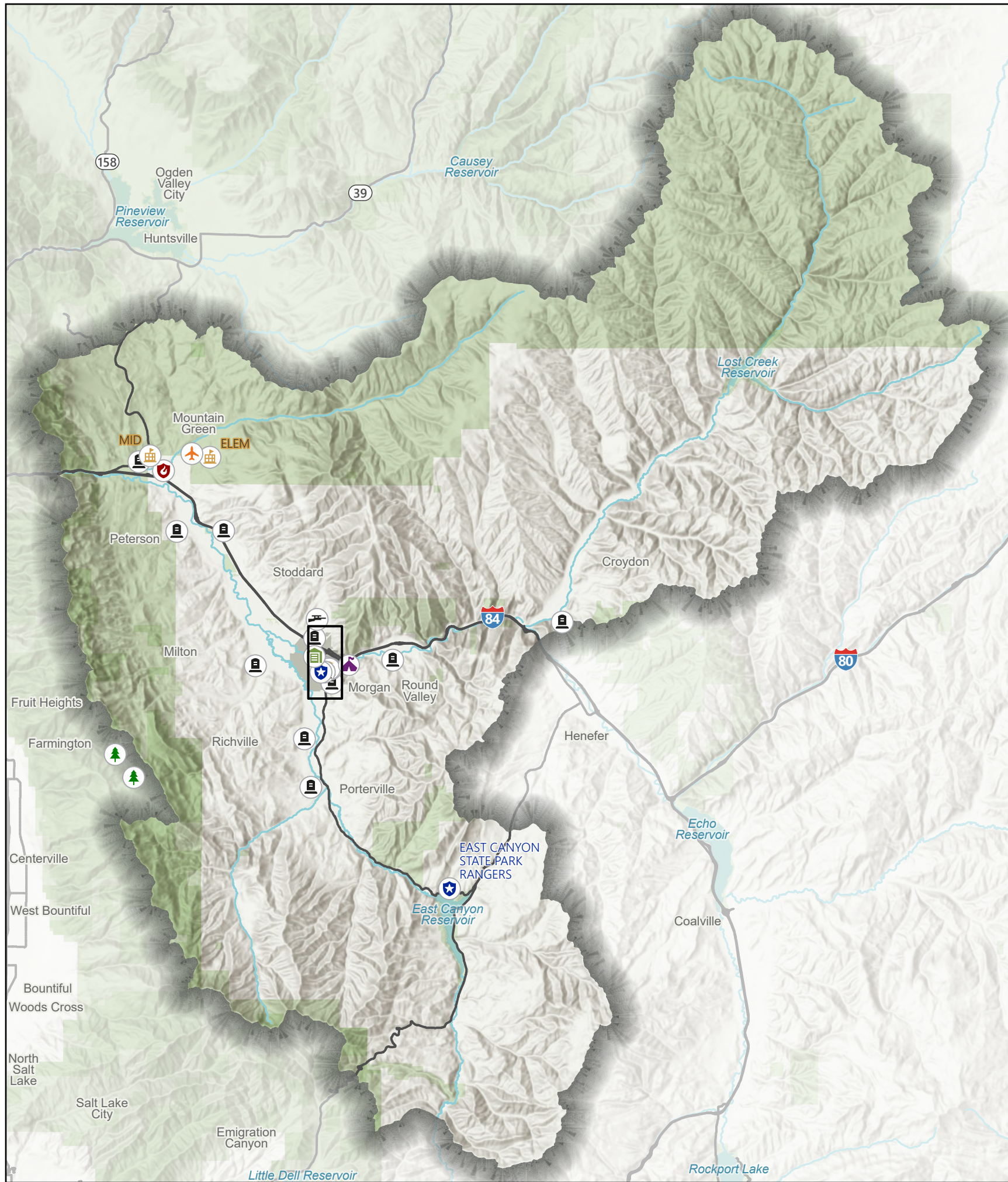


WATERWAYS & FLOOD HAZARDS



- Quaternary Faults
 - High Risk WUI Properties
 - National Wetlands
 - Groundwater Source Protection Zones
- Flood Hazard Zones**
- 1% Annual Chance Flood Hazard
 - Regulatory Floodway
 - Area of Undetermined Flood Hazard
 - 0.2% Annual Chance Flood Hazard
 - Area with Reduced Risk Due to Levee



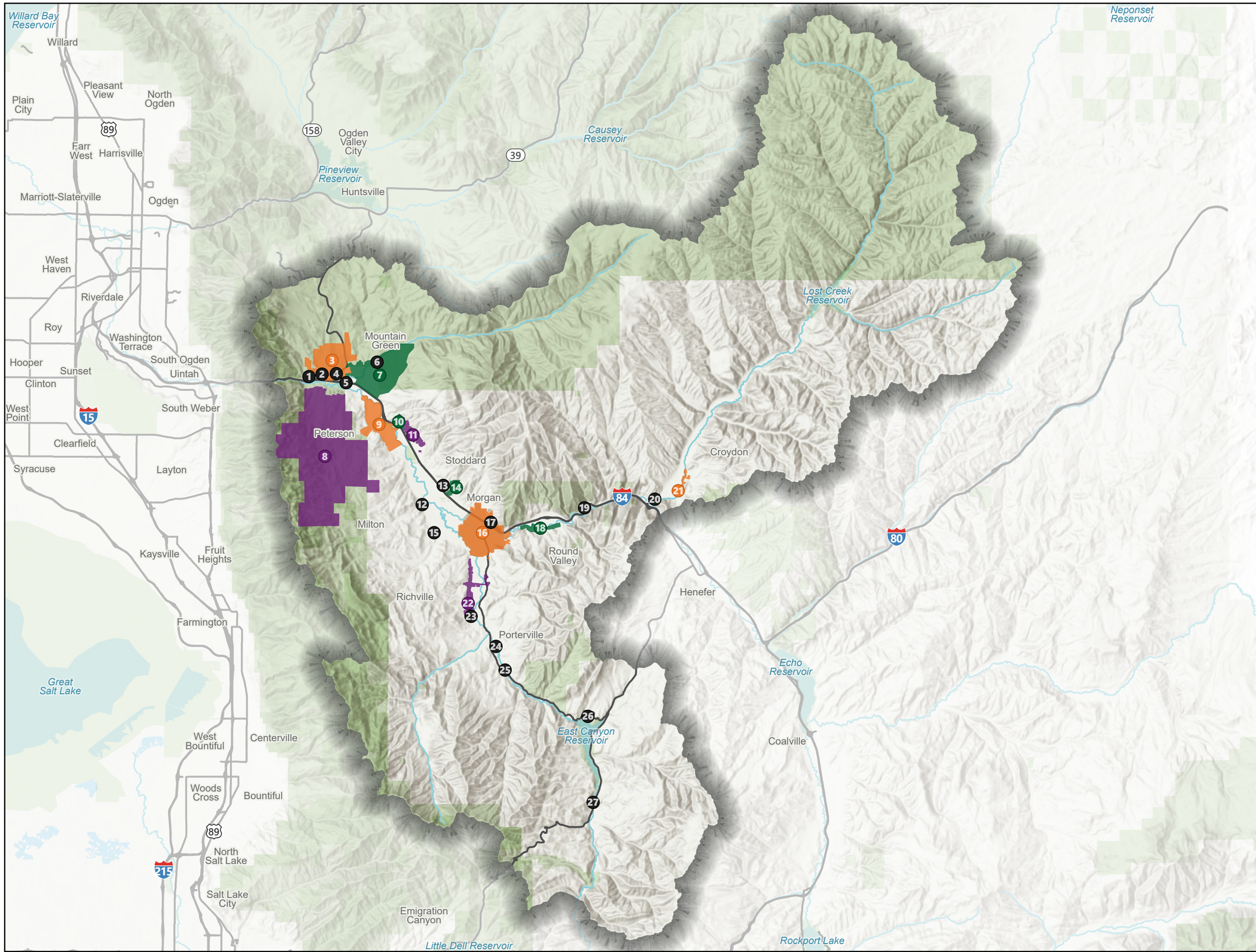


PUBLIC FACILITIES



- Airports (1)
- Cemeteries (10)
- Fairgrounds (1)
- Fire Stations (2)
- Forest Service Stations (2)
- Law Enforcement Locations (2)
- Post Offices (1)
- Public Libraries (1)
- Rifle Range (1)
- Schools (PreK-12) (6)
- Schools (Higher Education) (1)
- Transfer Station (1)
- County Courthouse (1)



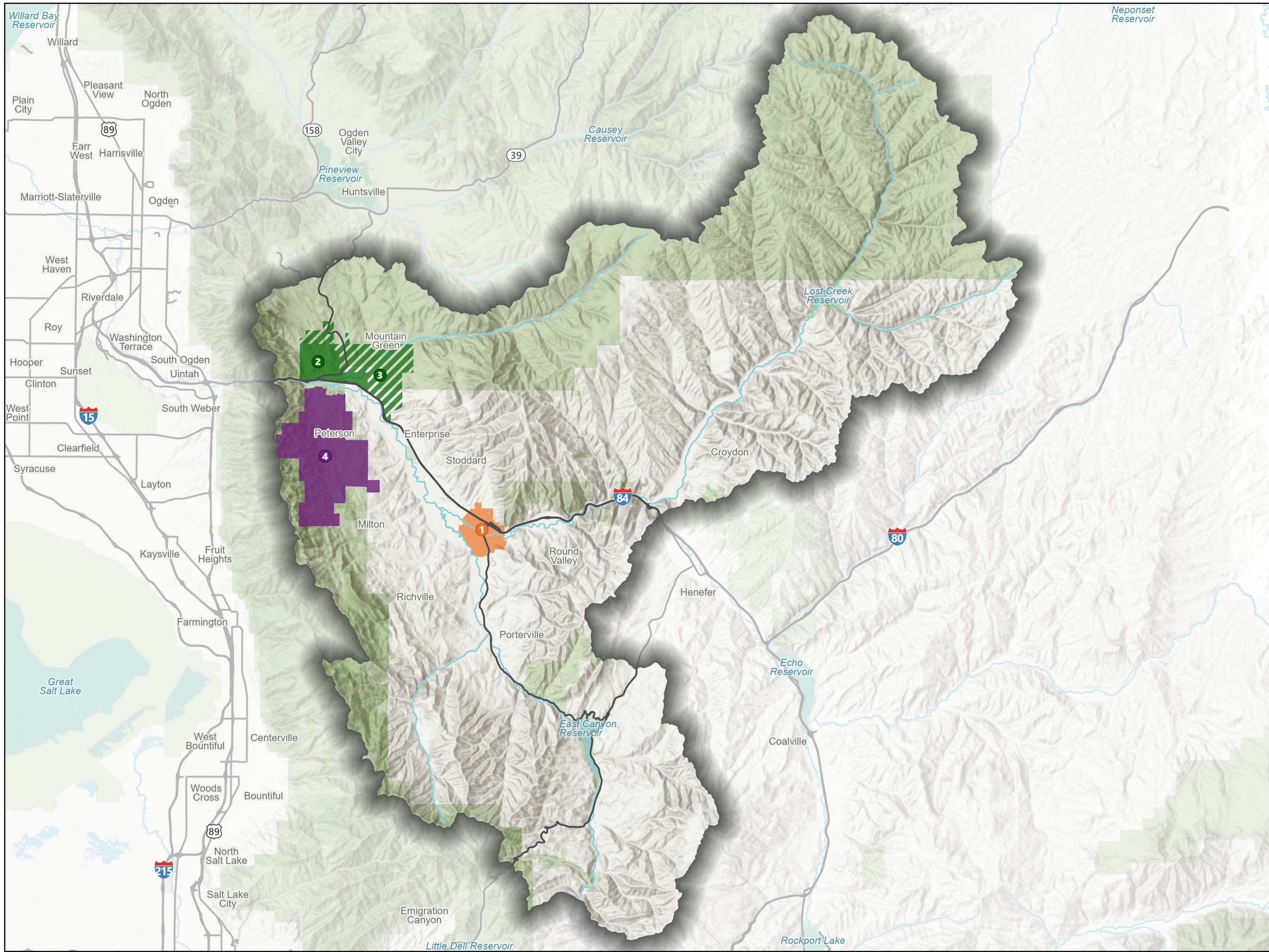


WATER SERVICE AREAS



- 1. Monte Verde
- 2. Mountain Green Water Association
- 3. Highlands Water Company Inc
- 4. Mountain Green LDS Church
- 5. Mountain Green Highway Rest Stop
- 6. Browning Arms
- 7. Cottonwood Mutual
- 8. Wasatch Peaks Ranch
- 9. Peterson Pipeline Association
- 10. West Enterprise Water Association
- 11. Central Enterprise Water Co
- 12. Milton LDS Church
- 13. Kellys Road House #2 LLC
- 14. Hidden Hollow Water Company
- 15. South Littleton
- 16. Morgan City Water System
- 17. South Robinson Spring Water Users
- 18. Round Valley Country Club
- 19. Taggarts Grill
- 20. Holcim (US) Inc.
- 21. Croydon Pipeline Corporation
- 22. Richville
- 23. Morgan 5th & 6th Wards
- 24. Camp Zarahemla
- 25. Camp Woodland
- 26. East Canyon State Park
- 27. East Canyon Resort



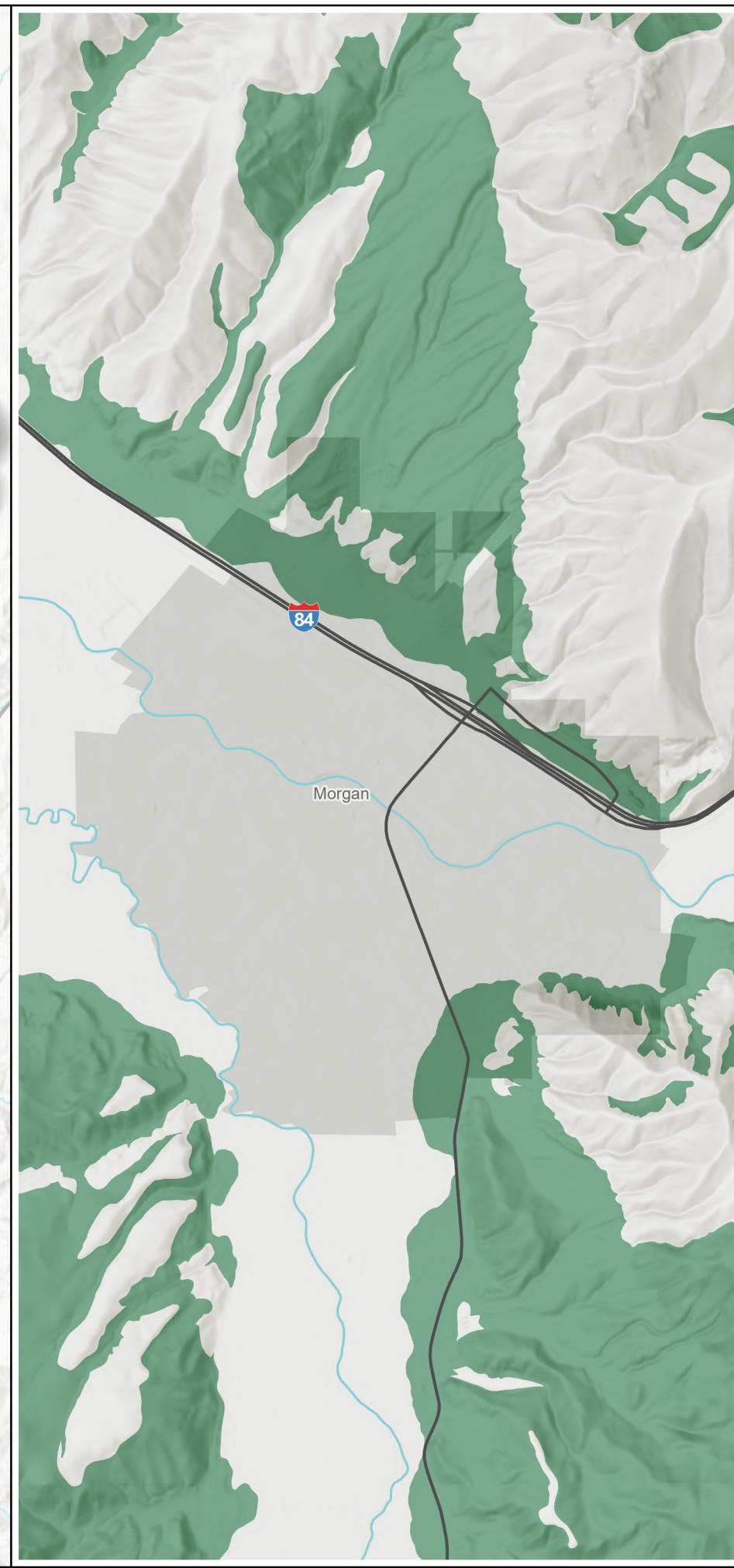
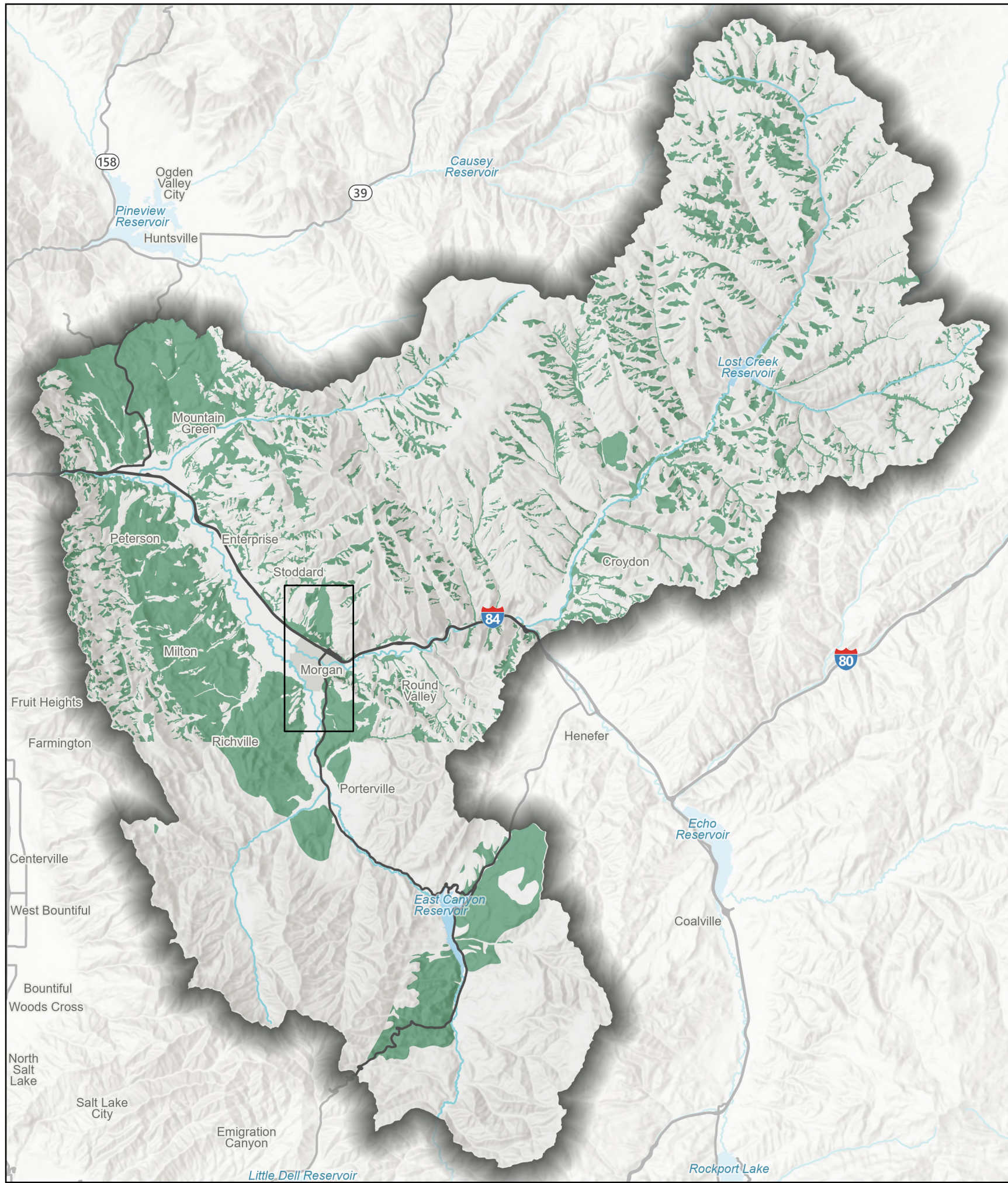


SEWER



- 1. Morgan Wastewater
- 2. Mountain Green Sewer Improvement District
- 3. Mountain Green Sewer Improvement District (Future)
- 4. WPR Utility District





SOILS



- Hazardous Soils
- Non-Hazardous Soils

Data from the Utah Geologic Survey quad maps Salt Lake City (100k) and Ogden (62k).

